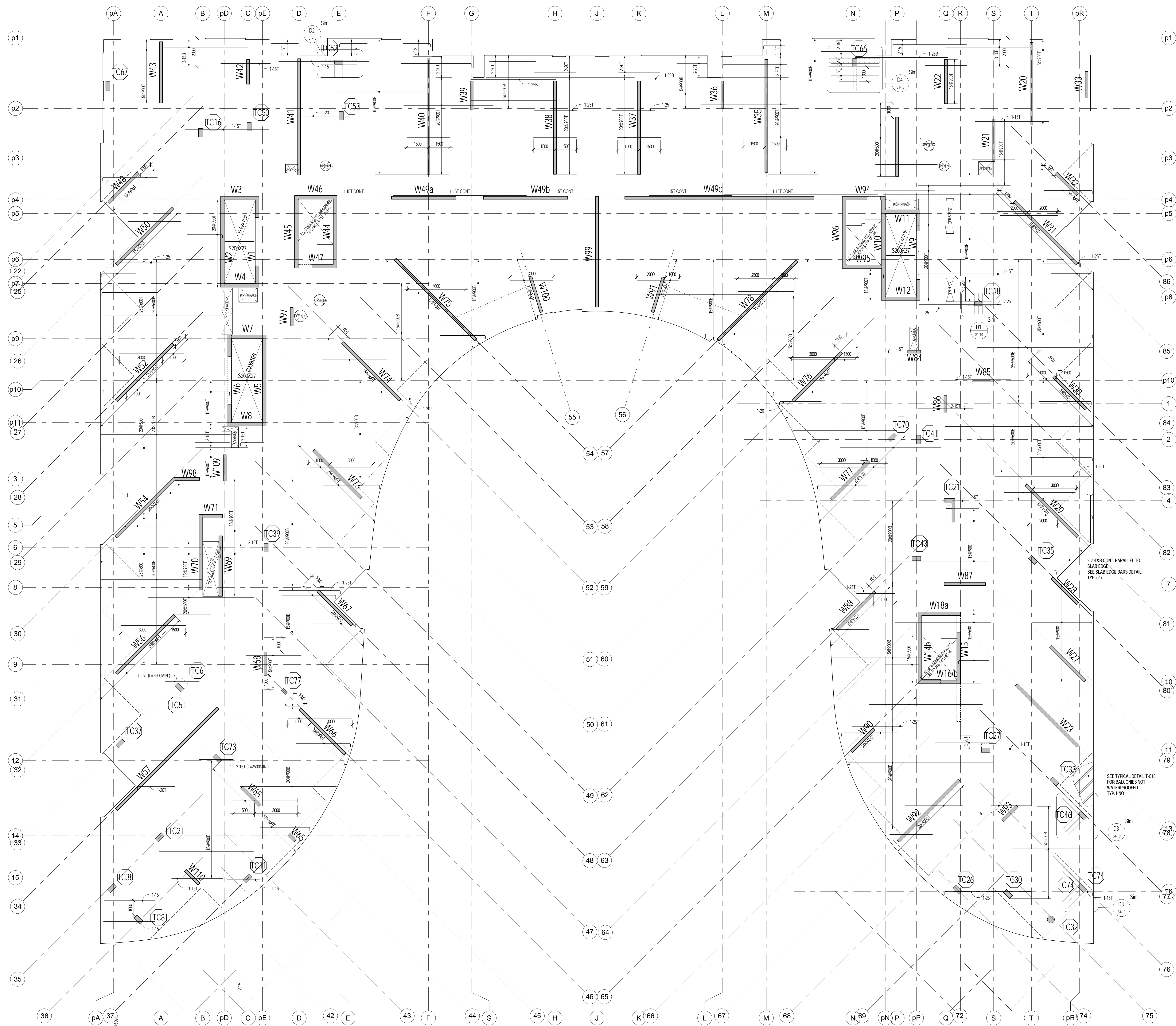
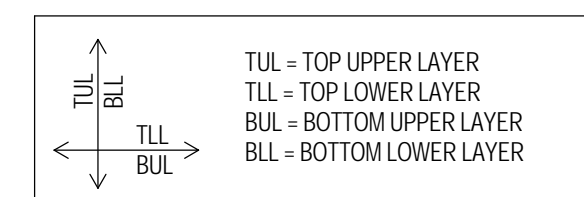
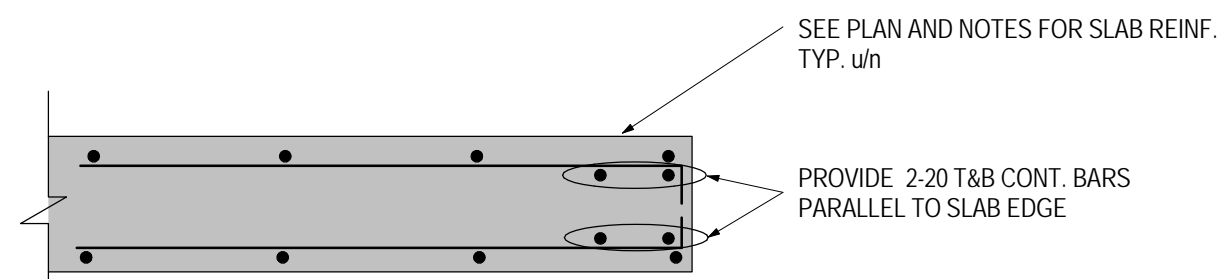
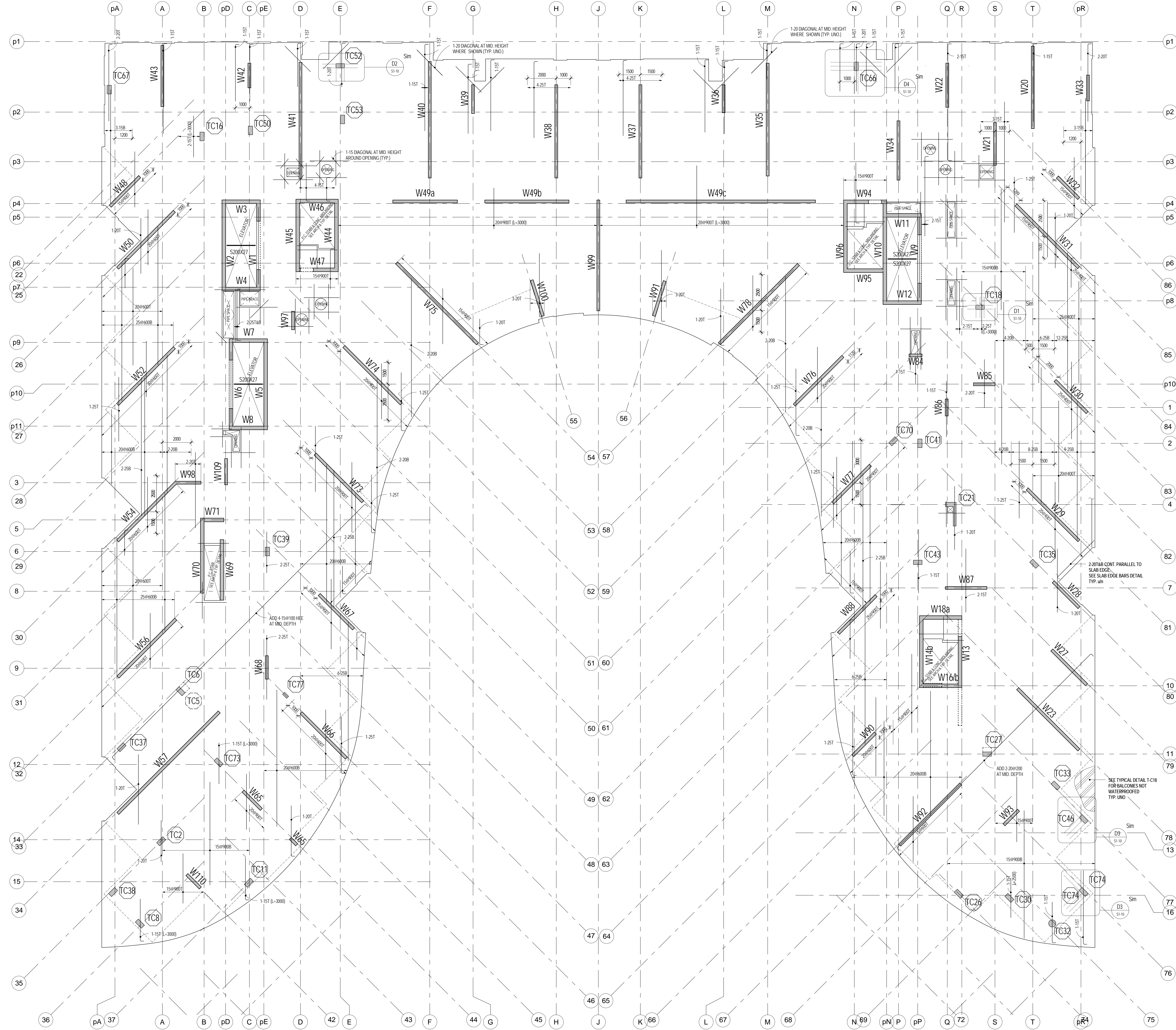


LEVEL 8 FRAMING PLAN - WITH BUL AND TLL
1:100



LEVEL 8 FRAMING PLAN - WITH BILL AND TUL
1:100



SEE PLAN FOR ADDITIONAL REINFORCEMENT

- NOTES:
- TOP OF STRUCTURAL SLAB TO BE 0.07m BELOW FINISHED FLOOR DATUM ELEVATION, EXCEPT AS CROSSED AND NOTED. SEE ARCHITECTURAL DRAWINGS FOR DATUM ELEVATION.
 - THE STRUCTURAL SLAB HAS BEEN DESIGNED FOR THE FOLLOWING LIVE LOADS (LL) AND SUPERIMPOSED DEAD LOADS (DL) IN ADDITION TO THE SELF WEIGHT:

USE	LL (kPa)	DL (kPa)
OFFICE	2.0	0.5
RESIDENTIAL	2.0	0.5
RETAIL	3.0	0.5
RESTAURANT	4.0	0.5
THEATRE	5.0	0.5
WALKWAY	2.0	0.5
 - CONCRETE COVER FOR TOP AND BOTTOM BARS IN SLABS TO BE 25 mm.
 - APPROVAL MUST BE OBTAINED FROM ENGINEER FOR ALL OPENINGS GREATER THAN 1000 mm IN ANY DIRECTION.
 - THE REINFORCEMENT MUST BE CORRECTLY TIED OFF TO THE STRUCTURE PRIOR TO PLACING STRUCTURAL CONCRETE FOR A REVIEW OF PREPARATIONS.
 - SEE ALL TYPICAL WALLS AND DETAILS.
 - SEE BEAM AND COLUMN SCHEDULES, WALL ELEVATIONS.
 - PROVIDE CONCRETE TOP FLOOR SLAB, TOP AND BOTTOM, NOTED AT EDGE OF SLAB AND OPENINGS, IN ADDITION TO REINFORCEMENT SHOWN ON PLAN.
 - PROVIDE TIES FOR ALL SLAB REINFORCEMENT.
 - ADD 2.0% BAR CONT. AT PERIMETER BEND BARS TO SLAB EDGE. SEE SLAB EDGE BARS DETAIL.

4	BUILDING PERMIT	SEPT 21, 2015
3	BUILDING PERMIT	JULY 22, 2015
2	BUILDING PERMIT SUBMISSION	JUNE 12, 2015
1	ISSUED FOR REVIEW	MAY 05, 2015

AQUAVISTA
AT BAYSIDE TORONTO

LEVEL 8 FLOOR FRAMING
PLAN

Hines TRIDEL
AQUAVISTA
Block 3 - R3 & R4
Merchant's Wharf
Toronto, ON

As indicated
DC
IA/BBS
20140031
SEPT 21, 2015

S1-15